



**GOLD
ROAD**
RESOURCES

Duncan Gibbs
Managing Director & CEO



BUILDING AUSTRALIA'S NEXT GOLD MINE
INVESTOR PRESENTATION PERTH - FEBRUARY 2019

DISCLAIMER

IMPORTANT NOTICES

Nature of this document: The purpose of this presentation is to provide general information about Gold Road Resources Limited (the 'Company'). Unless otherwise stated herein, the information in this presentation is based on the Company's own information and estimates. In attending this presentation or viewing this document you agree to be bound by the following terms and conditions. This document has been prepared by the Company. Information in this document should be read in conjunction with other announcements made by the Company to the Australian Securities Exchange and available at www.goldroad.com.au or www.asx.com.

Not an offer: This presentation is for information purposes only and does not constitute or form any part of any offer or invitation to sell or issue, or any solicitation of any offer to purchase or subscribe for, any securities in the Company in any jurisdiction. This presentation and its contents must not be distributed, transmitted or viewed by any person in any jurisdiction where the distribution, transmission or viewing of this document would be unlawful under the securities or other laws of that or any other jurisdiction.

Not financial product advice: This presentation does not take into account the individual investment objectives, financial situation and particular needs of each of the Company's Shareholders. You may wish to seek independent financial and taxation advice before making any decision in respect of this presentation. Neither the Company nor any of its related bodies corporate is licensed to provide financial product advice in respect of the Company's securities or any other financial products.

Forward-looking statements: Certain statements in the presentation are or may be "forward-looking statements" and represent the Company's intentions, projections, expectations or beliefs concerning, among other things, future operating and exploration results or the Company's future performance. These forward looking statements speak, and the presentation generally speaks, only at the date hereof. The projections, estimates and beliefs contained in such forward looking statements necessarily involve known and unknown risks and uncertainties, and are necessarily based on assumptions, which may cause the Company's actual performance and results in future periods to differ materially from any express or implied estimates or projections.

Disclaimer: No representation or warranty, express or implied, is made by the Company that the material contained in this presentation will be achieved or prove to be correct. Except for statutory liability which cannot be excluded, each of the Company, its directors, officers, employees, advisers and agents expressly disclaims any responsibility for the accuracy, fairness, sufficiency or completeness of the material contained in this presentation, or any opinions or beliefs contained in this document, and excludes all liability whatsoever (including in negligence) for any loss or damage which may be suffered by any person as a consequence of any information in this presentation or any error or omission there from. The Company is under no obligation to update or keep current the information contained in this presentation or to correct any inaccuracy or omission which may become apparent, or to furnish any person with any further information. Any opinions expressed in the presentation are subject to change without notice.

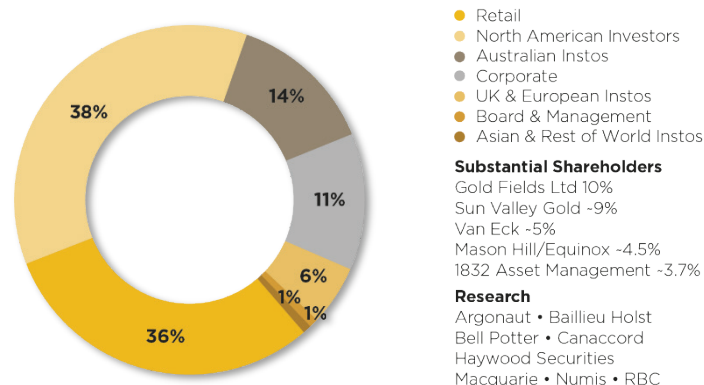
Unverified information: This presentation may contain information (including information derived from publicly available sources) that has not been independently verified by the Company.

CORPORATE PROFILE

BOARD OF DIRECTORS

Tim Netscher	Non-Executive Chairman
Duncan Gibbs	Managing Director & CEO
Justin Osborne	Executive Director – Exploration & Growth
Sharon Warburton	Non-Executive Director
Brian Levett	Non-Executive Director
Hayden Bartrop	Joint Company Secretary
Carol Marinkovich	Joint Company Secretary

SHAREHOLDERS



CAPITAL STRUCTURE

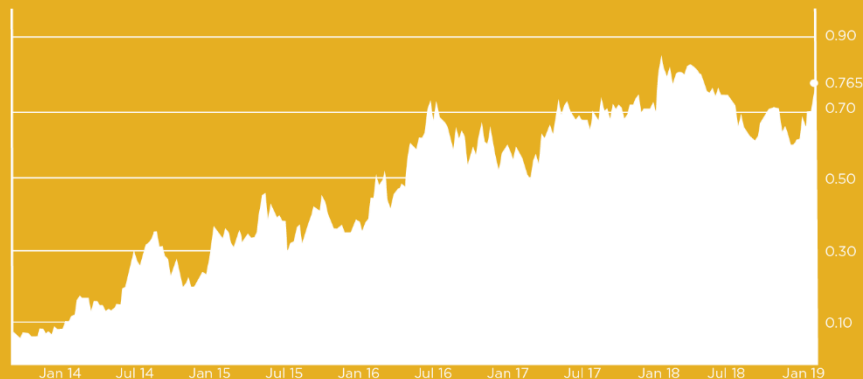
Issued Shares	877M ¹	
Performance Rights	6.8M ¹	
Market Cap	A\$671M ²	US\$483M
Cash and Equivalents	A\$44M ¹	US\$32M
Finance Facilities (undrawn)	A\$147M ¹	US\$106M
Hedging	110 koz @ A\$1,808/oz ³	

¹ As at 31 December 2018

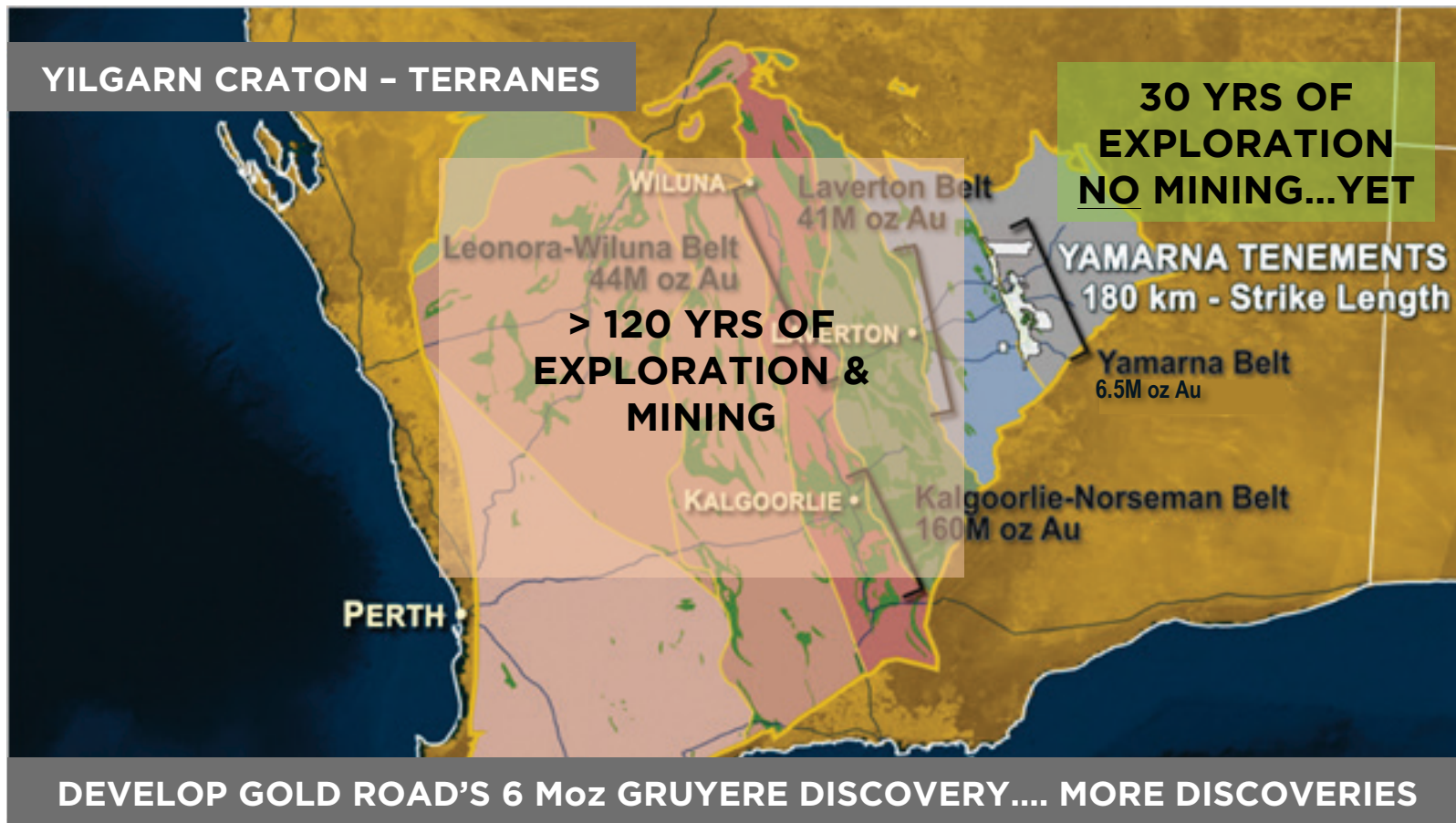
² As at 30 January 2019, based on last close price of A\$0.765 per share

³ As at 31 January 2019

SHAREPRICE PERFORMANCE

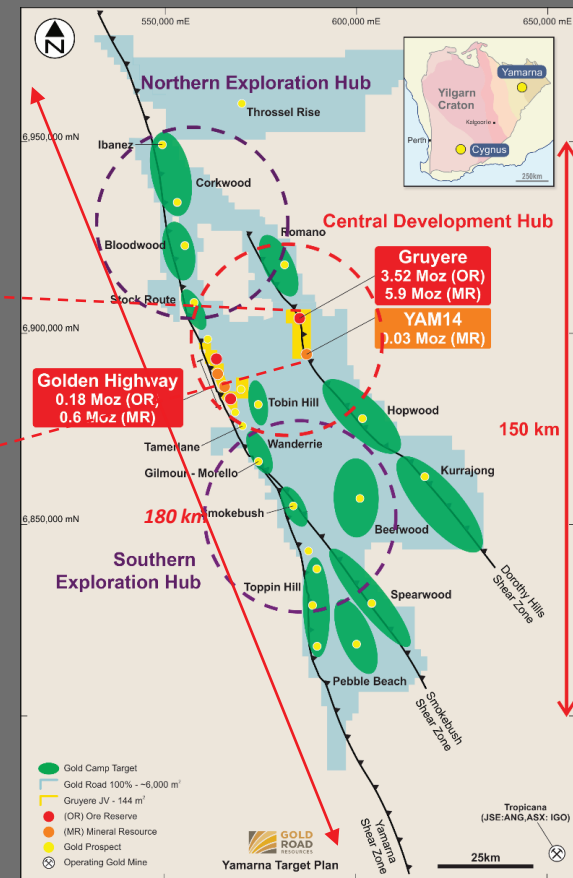
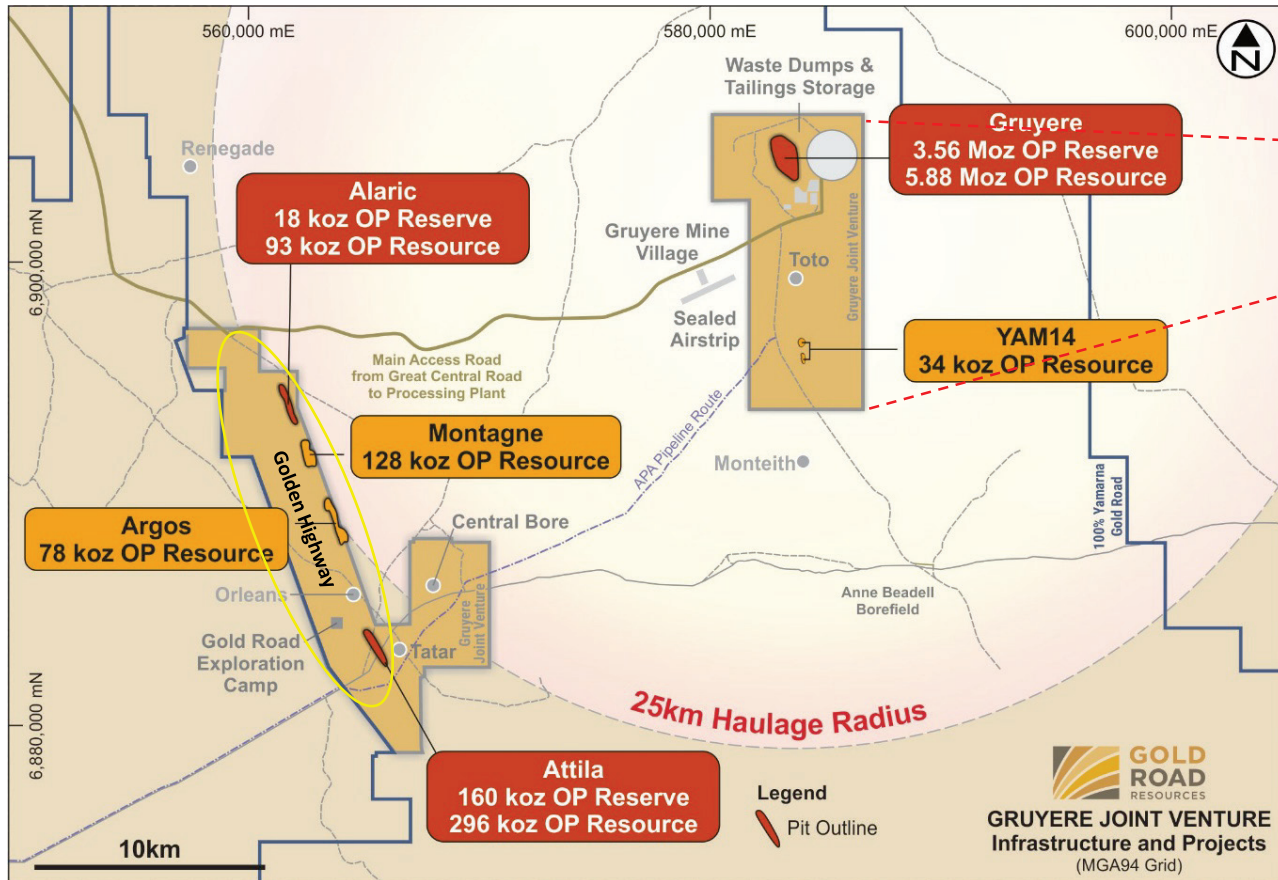


UNLOCKING VALUE FOR SHAREHOLDERS



GRUYERE JOINT VENTURE

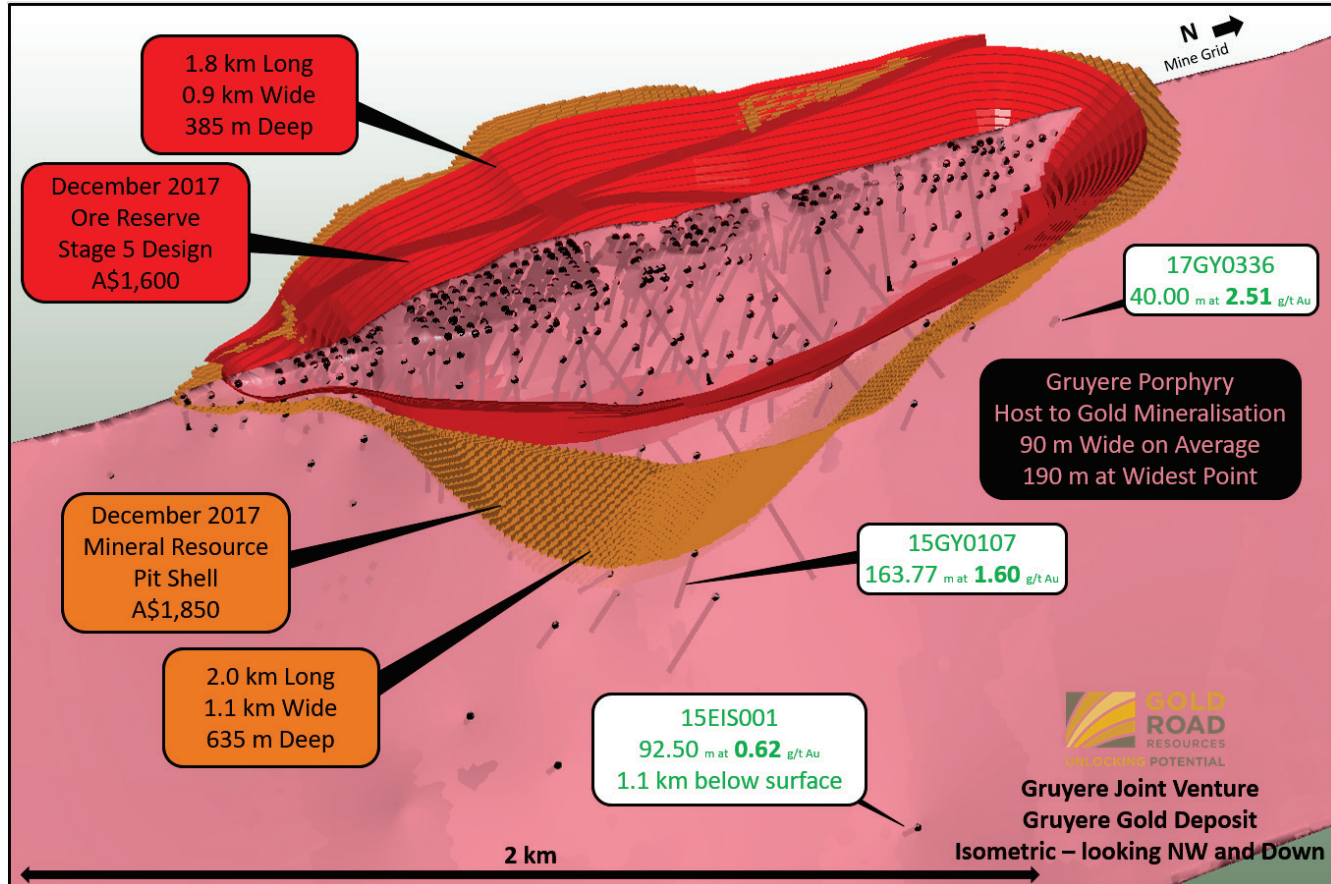
GOLD ROAD 50% | GOLD FIELDS 50%



Total Resource: 6.51 Moz*
Total Reserve: 3.74 Moz*

*Refer to ASX announcement dated 21 February 2018

GRUYERE SIMPLE GEOLOGY = LOW RESOURCE RISK



GRUYERE

UNLOCKING QUALITY

Simple open pit mining

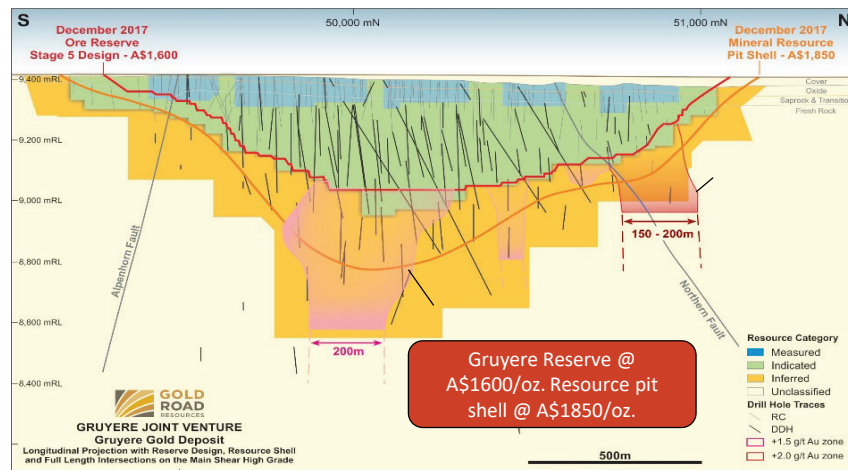
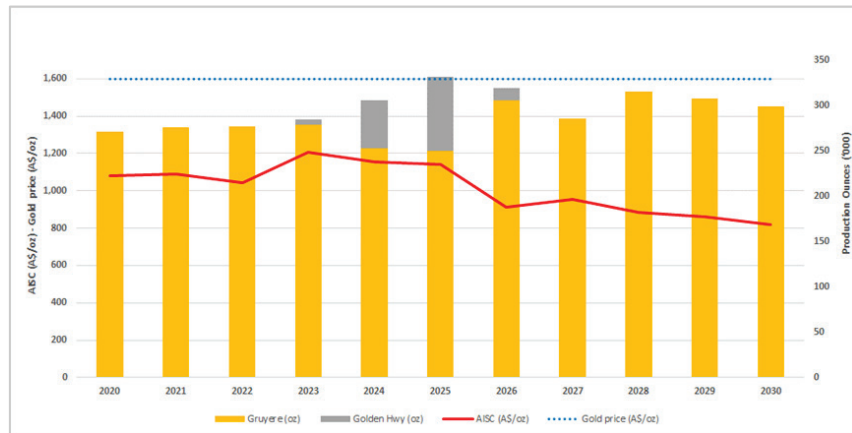
- Low strip ratio of 2.7:1 and low risk 5 stage mine plan
- Homogeneous and predictable grade at ~ 9,250 ozpvm
- First 2 years of grade control complete
- Building stockpiles ahead of production requirements

Simple processing

- Gravity CIL processing circuit with favourable metallurgy
 - Overall recovery 91-94%
 - Gravity recovery 35-40%
 - Opportunities to optimize and increase throughput

Gruyere pit shell shows substantial upside to Reserve

- Reserve at A\$1,600/oz (US\$1,165/oz)
- Resource pit shell at A\$1,850/oz (US\$1,350/oz) hosts additional 2.3 Moz





Thickeners

CIL Tanks

Powerhouse

Gold Room

SAG & Ball Mills

Loading Ramp

GRUYERE CONSTRUCTION PROGRESS

GRUYERE PLANT

UNLOCKING AUSTRALIA'S NEXT GOLDMINE

- Gruyere – Construction 91% complete¹
- Primary Crusher to Coarse Ore Stockpile commissioned January 2019¹
- Powerhouse commissioned³
- Fully funded to first gold in 2QCY19²
- Capex ~A\$621M² (GOR share ~A\$284M)²



¹ Refer to ASX announcement dated 29 January 2019

² Refer to ASX announcement dated 30 July 2018, -2%/+2%

³ Refer to ASX announcement dated 6 December 2018

GRUYERE MINE

UNLOCKING AUSTRALIA'S NEXT GOLDMINE

- Mining commenced November 2018²
- First ore mined on schedule January 2019¹
- Significant amount of ore forecast to be stockpiled in advance of first production¹
- Downer commenced double-shift operations¹
- Blasting commenced

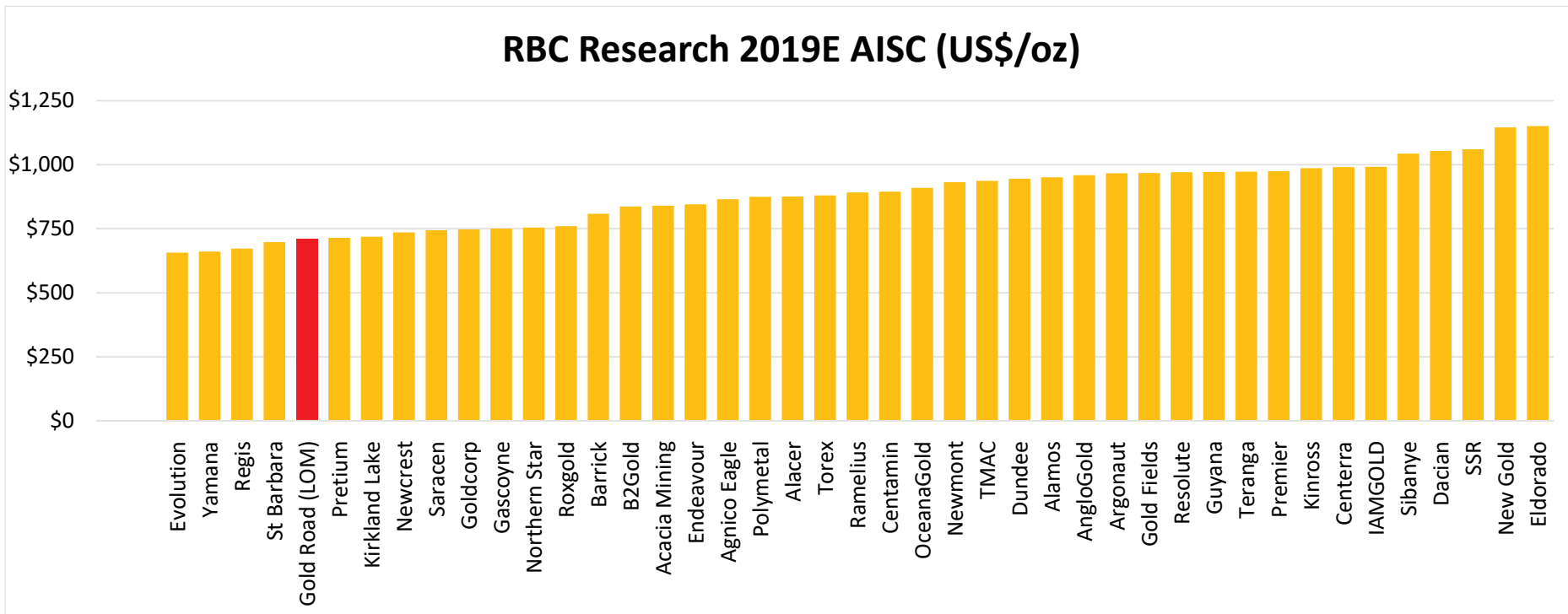


¹ Refer to ASX announcement dated 29 January 2019

² Refer to ASX announcement dated 6 December 2018

UNLOCKING VALUE

PEER ANALYSIS

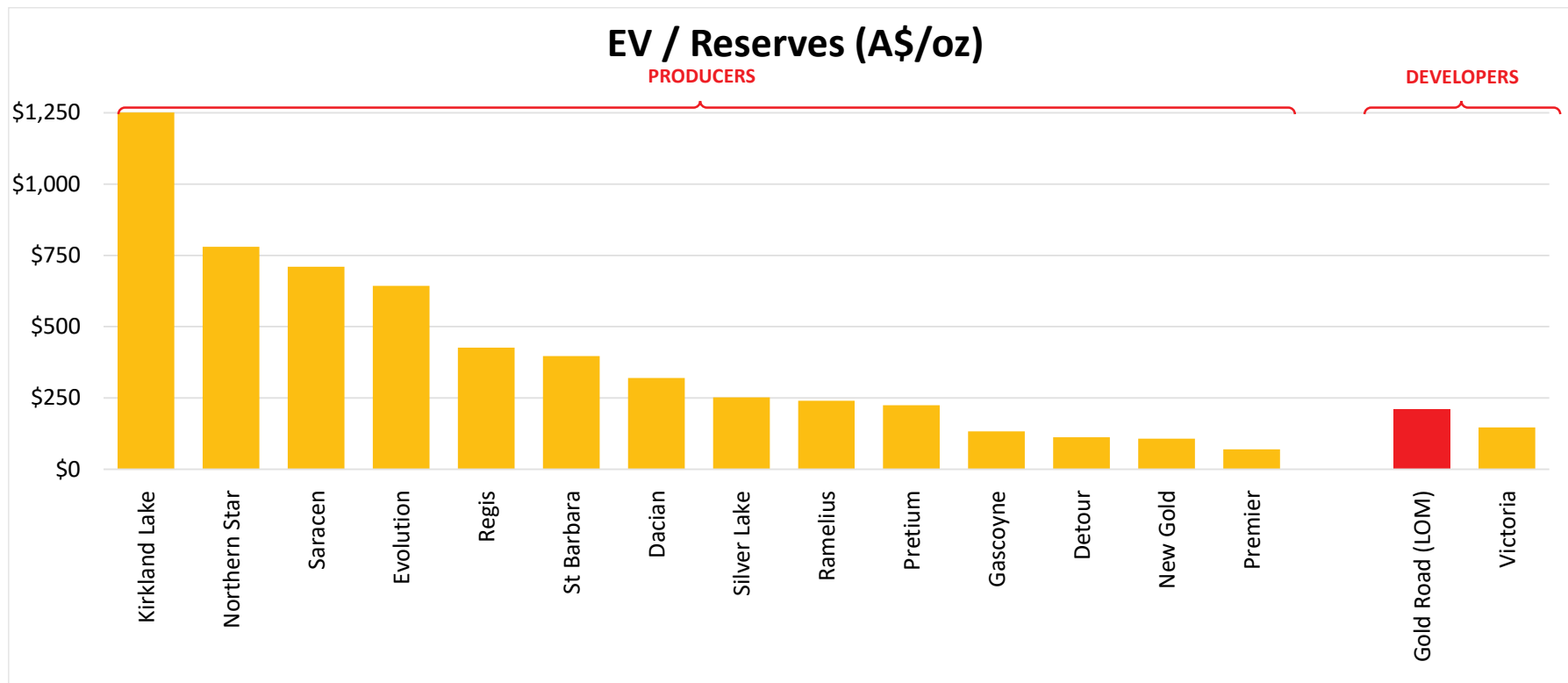


Source: RBC Capital Markets, SNL Metals & Mining, Company Announcements

Notes: Gruyere data 100% and average LOM. EV/ Reserve data from Australia. EV calculated on 6th September 2018 for tier one jurisdictions. *Material Moved = Ore + Waste movement. Revenue assumptions at US\$1300/oz. Mine life as reported or otherwise estimated as reserves / 2018 production. Cowal FS is 2003 pre-mine (pre-strip). Cowal 2018 is current strip but excludes planned Stage H cutback.

UNLOCKING VALUE

PEER ANALYSIS



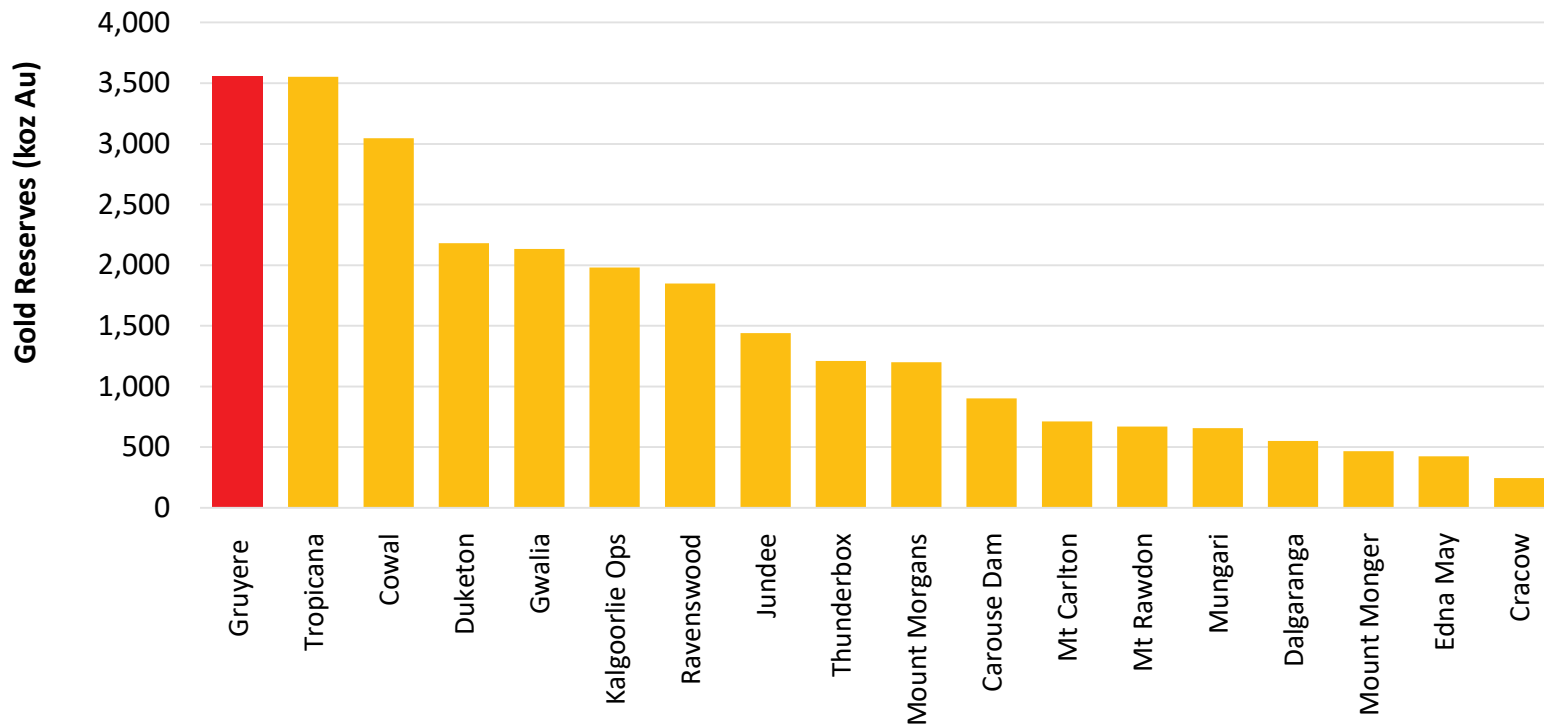
Source: RBC Capital Markets, SNL Metals & Mining, Company Announcements

Notes: Gruyere data 100% and average LOM. EV/ Reserve data from Australia. EV calculated on 6th September 2018 for tier one jurisdictions. *Material Moved = Ore + Waste movement. Revenue assumptions at US\$1300/oz. Mine life as reported or otherwise estimated as reserves / 2018 production. Cowal FS is 2003 pre-mine (pre-strip). Cowal 2018 is current strip but excludes planned Stage H cutback.

UNLOCKING VALUE

PEER ANALYSIS

Gold Reserves - Australia's Major Gold Mines



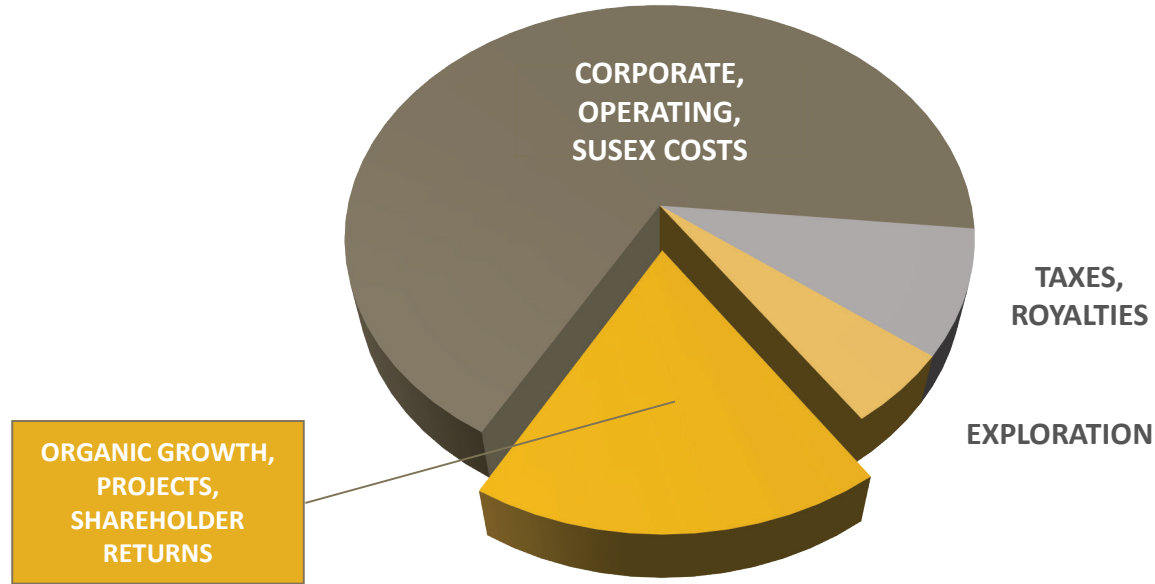
Source: RBC Capital Markets, SNL Metals & Mining, Company Announcements

Notes: Gruyere data 100% and average LOM. EV/ Reserve data from Australia. EV calculated on 6th September 2018 for tier one jurisdictions. *Material Moved = Ore + Waste movement. Revenue assumptions at US\$1300/oz. Mine life as reported or otherwise estimated as reserves / 2018 production. Cowal FS is 2003 pre-mine (pre-strip). Cowal 2018 is current strip but excludes planned Stage H cutback.

UNLOCKING NEAR TERM CASH FLOW

GROWTH/RETURNS

- Gruyere ramping up to ~150 kozpa from 2Q19 for Gold Road
- Minimal debt



- Franking credits of A\$70M after tax on sale of 50% Gruyere¹

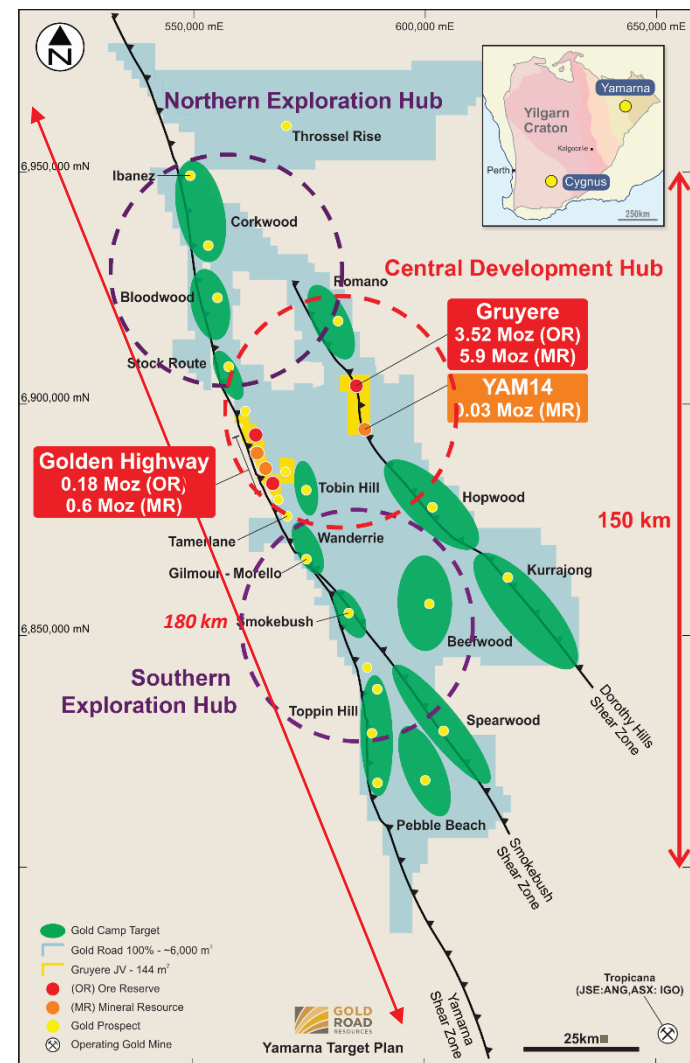
¹As at 31 December 2017

Pie chart: Indicative, based on : Average over life of mine, Long term Gold Price of A\$1,730/oz, Production and costs taken from 2018 Mine plan

YAMARNA

A MAJOR EXPLORATION & DEVELOPMENT PROJECT

- One of Australia's largest greenfields gold exploration projects
 - 180 km of greenstone strike (distance Kalgoorlie to Norseman hosting 160 Moz)
- Exploration budget 2019 – A\$17-20m
 - Planned 40,000-50,000 m of RC and diamond drilling
 - Planned aircore geochemistry across 40-60 km² of unexplored tenure
- Activity centred around a mining hub and two exploration hubs:
 - Central Hub – Gruyere (50%) in construction, grow mine plan (50% & 100%)
 - Southern Hub (100%) – Gilmour, Smokebush, Toppin Hill, Wanderrie
 - Northern Hub (100%) – Ibanez (Corkwood), Bloodwood, Romano
- Exploration focussed on defining deposits that support the next standalone (>1 Moz) operation on 100% ground



EXPLORATION

SOUTHERN HUB

Wanderrie - Gilmour^{1,2}

- 4 m at 19.6 g/t Au
- 8 m at 7.11 g/t Au
- 5 m at 12.52 g/t Au
- 1.8 m at 29.68 g/t Au
- 0.62 m at 117.78 g/t Au

Smokebush²

- 6.8 m at 31.1 g/t Au
- 7.7 m at 5.5 g/t Au

Toppin Hill

- 12 m at 4.7 g/t Au
- 9.1 m at 3.5 g/t Au

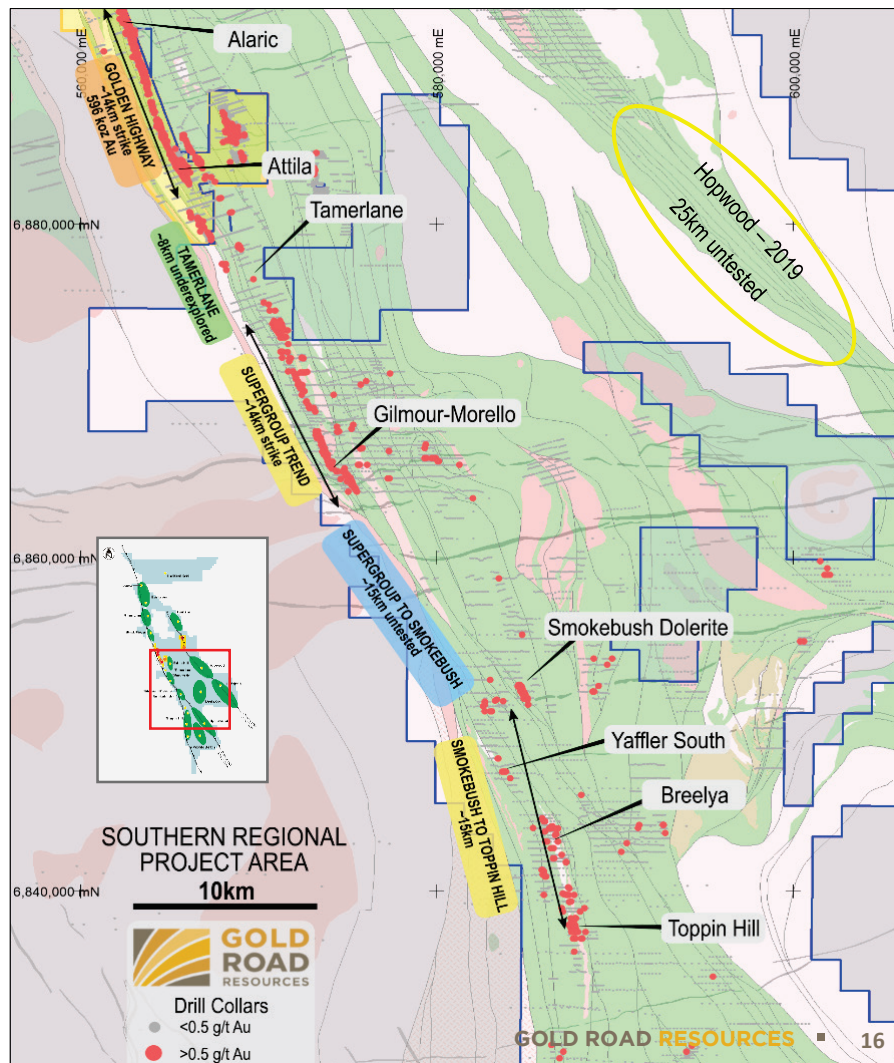
Tamerlane

- 3 m at 34.07 g/t Au³

¹Refer to ASX announcement dated 31 January 2019

²Refer to ASX announcement dated 19 December 2018

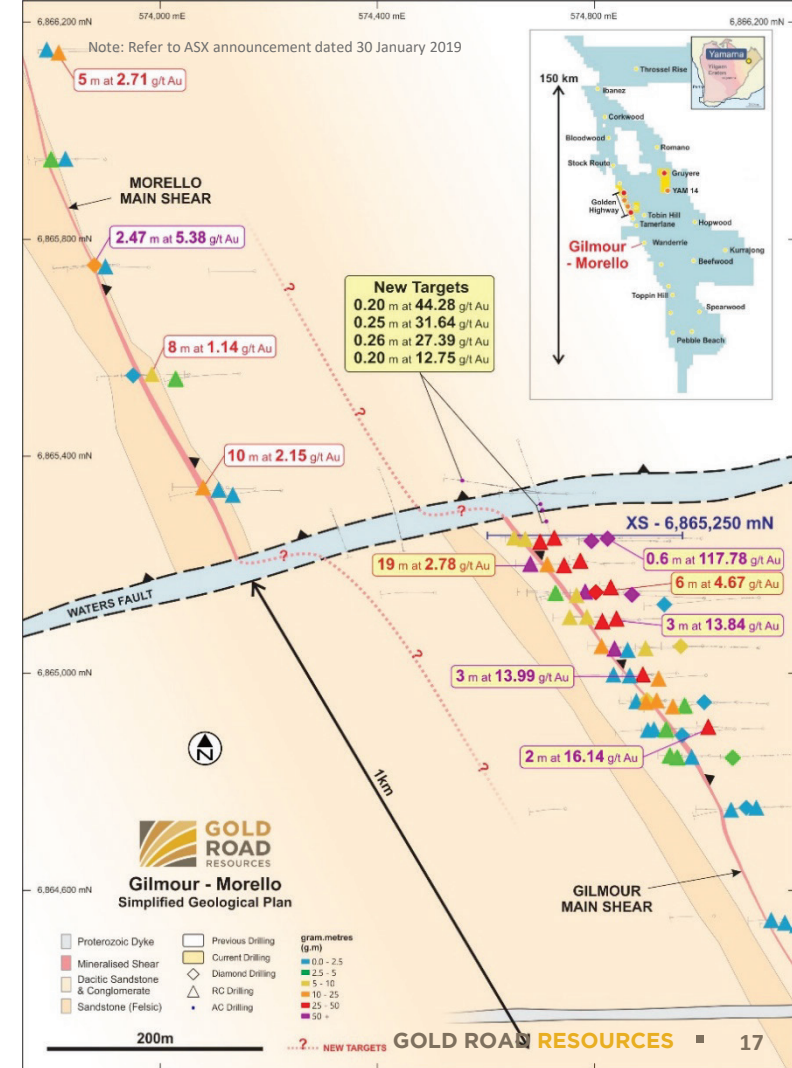
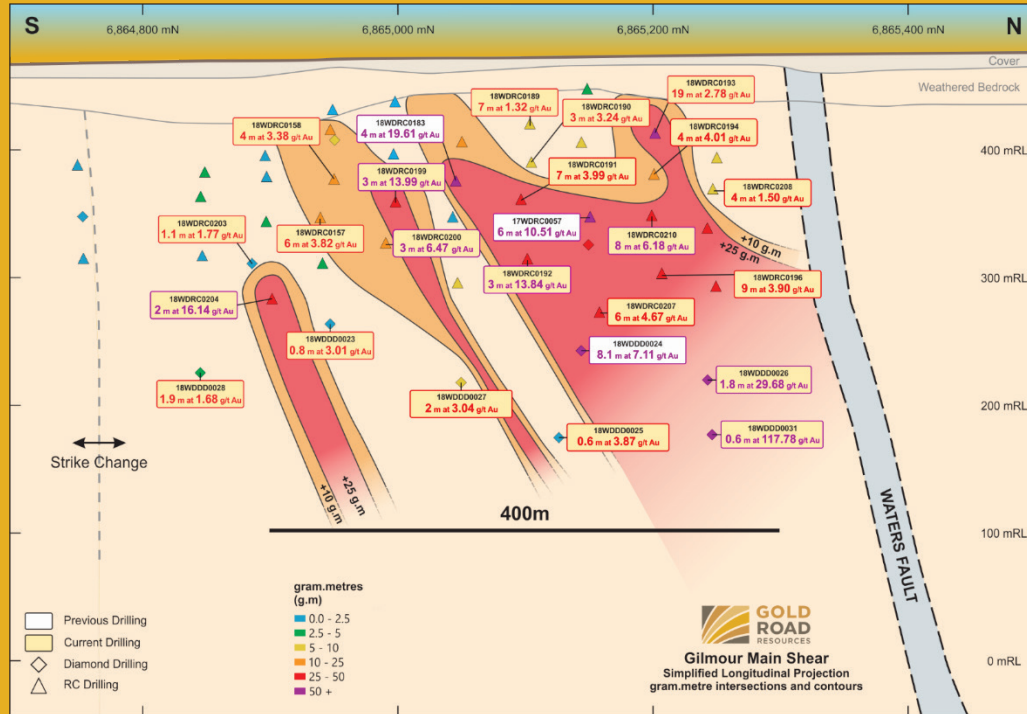
³Refer to ASX announcement dated 20 September 2018



SOUTHERN HUB

WANDERRIE - GILMOUR

- High-grade shear zone at south end of 14 km Supergroup Trend
- Highly continuous quartz vein with abundant coarse gold open at depth
- Resource drilling in progress. Potential offset/parallel structure at Morello



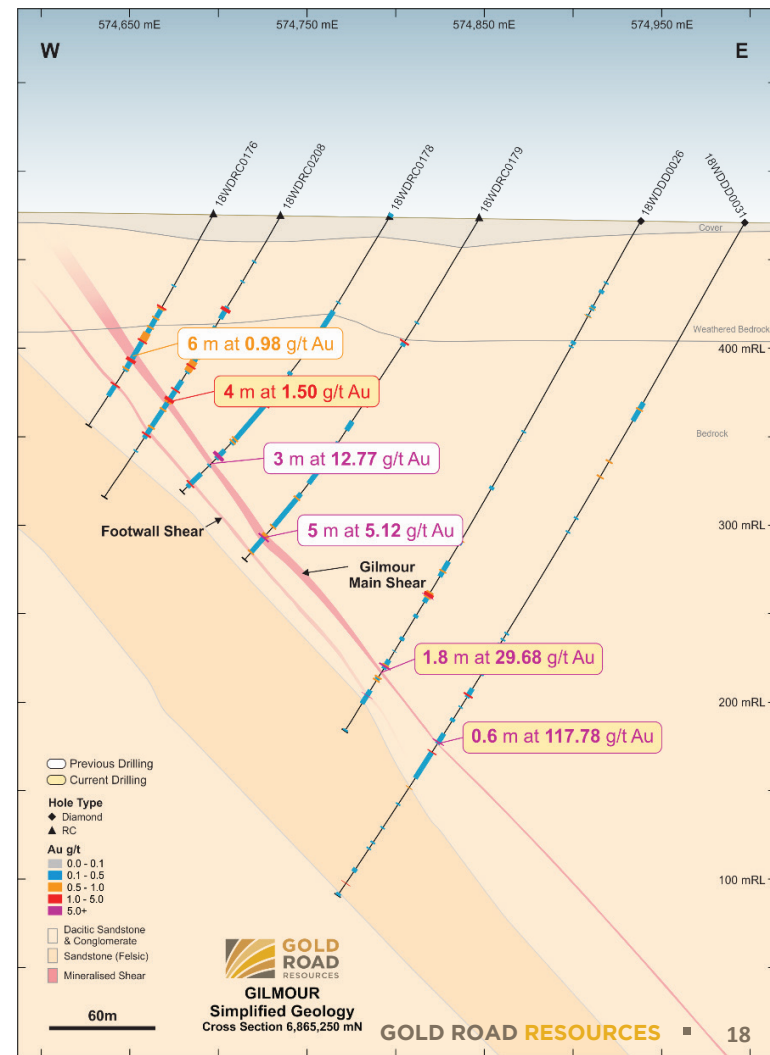
GILMOUR – HIGH-GRADE GOLD

- Mineralisation currently defined over ~500 m strike, ~300 m dip and ~4 m width
- Drilling at Gilmour to recommence first quarter of 2019
- Gold consistently associated with sheared lithological contact

Diamond drill core photo 18WDDD0024 with gold assays – total intercept 8.14m at 7.11 g/t Au



Note: Refer to ASX announcement 30 January 2019



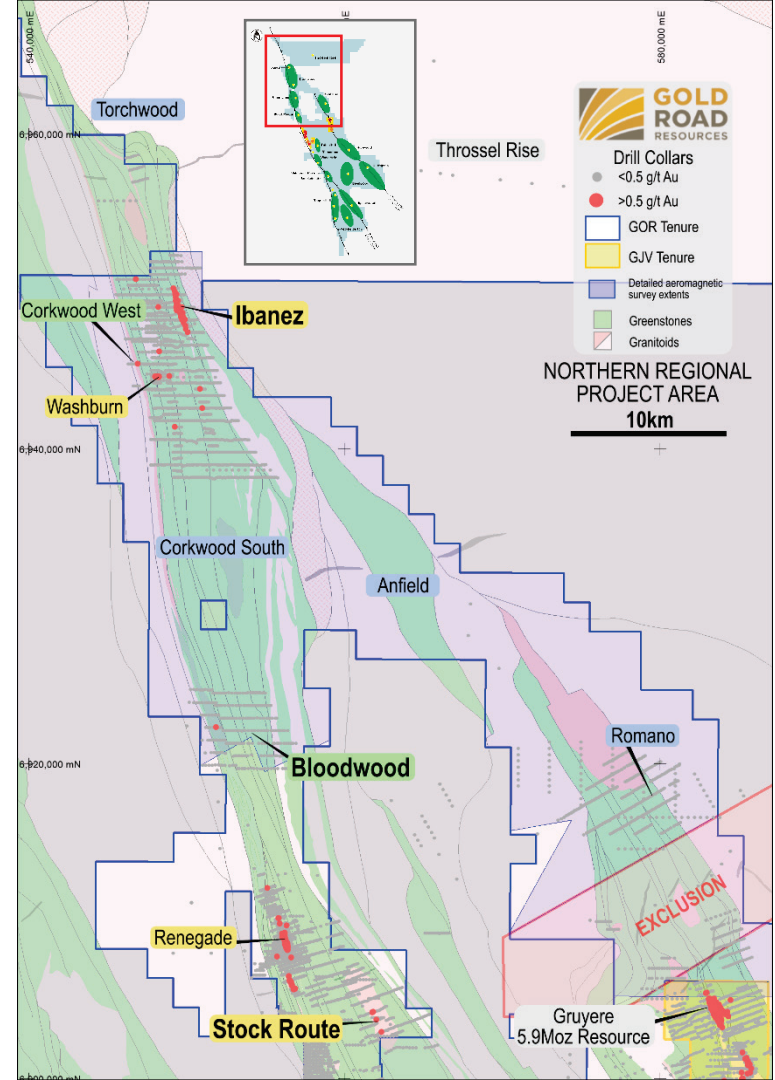
EXPLORATION NORTHERN HUB

Ibanez (Corkwood)

- 10 m at 28.7 g/t Au
- 8 m at 11.63 g/t Au
- 2 m at 10.89 g/t Au*

Bloodwood

- 5 km long anomaly
- Best intercept of 4 m at 9 g/t Au*



UNLOCKING POTENTIAL FOR INVESTORS

- **Australia's next gold producer – fully funded**
 - Undervalued near term low cost producer – months from production
 - Healthy margins to fund growth and shareholder returns
 - 50:50 JV Partner Gold Fields a proven global miner
- **Exploration Upside Significant**
 - Share price underpinned by Tier 1 gold mine
 - Exposure to under-explored, but proven, Yamarna Belt
- **Successful explorer of new gold belts**
 - Gilmour discovery on 100% owned ground
 - Disciplined team with innovative exploration methods
 - One of the largest Australian greenfields gold explorers



ASX:GOR | GOLDROAD.COM.AU

For all Investor Relations enquires:

Duncan Hughes – Manager, Business Development & Investor Relations

Tel: +61 8 9200 1600 | perth@goldroad.com.au



APPENDICES

- Competent Persons Statements
- Mineral Resource Statement
- Ore Reserve Statement
- Gold Fields Substantial Holding
- Innovation
- December 2018 Gruyere Mine Update



APPENDIX 1

COMPETENT PERSONS STATEMENT

Exploration Results

The information in this report which relates to Exploration Results is based on information compiled by Mr Justin Osborne, Executive Director-Exploration and Growth for Gold Road. Mr Osborne is an employee of Gold Road, and a Fellow of the Australasian Institute of Mining and Metallurgy (FAusIMM 209333). Mr Osborne is a shareholder and a holder of Performance Rights. Mr Osborne has sufficient experience that is relevant to the style of mineralisation and type of deposit under consideration and to the activity being undertaken to qualify as a Competent Person as defined in the 2012 Edition of the "Australasian Code for Reporting of Exploration Results, Mineral Resources and Ore Reserves". Mr Osborne consents to the inclusion in the report of the matters based on this information in the form and context in which it appears

Mineral Resources

The information in this report that relates to the Mineral Resource for Gruyere is based on information compiled by Mr Mark Roux. Mr Roux is an employee of Gold Fields Australia and is a Member of the Australasian Institute of Mining and Metallurgy (MAusIMM 324099) and is registered as a Professional Natural Scientist (400136/09) with the South African Council for Natural Scientific Professions. Mr Justin Osborne, Executive Director-Exploration and Growth for Gold Road and Mr John Donaldson, General Manager Geology for Gold Road have endorsed the Mineral Resource for Gruyere on behalf of Gold Road.

- Mr Osborne is an employee of Gold Road and a Fellow of the Australasian Institute of Mining and Metallurgy (FAusIMM 209333). Mr Osborne is a shareholder and a holder of Performance Rights.
- Mr Donaldson is an employee of Gold Road and a Member of the Australian Institute of Geoscientists and a Registered Professional Geoscientist (MAIG RPGeo Mining 10147). Mr Donaldson is a shareholder and a holder of Performance Rights.

The information in this report that relates to the Mineral Resource Estimation for Attila, Argos, Montagne, Alaric and YAM14 is based on information compiled by Mr Justin Osborne, Executive Director-Exploration and Growth for Gold Road, Mr John Donaldson, General Manager Geology for Gold Road and Mrs Jane Levett, Principal Resource Geologist for Gold Road.

- Mrs Levett is an employee of Gold Road and is a Member of the Australasian Institute of Mining and Metallurgy and a Chartered Professional (MAusIMM CP 112232).

Messrs Roux, Osborne and Donaldson and Mrs Levett have sufficient experience that is relevant to the style of mineralisation and type of deposit under consideration and to the activity being undertaken to qualify as Competent Persons as defined in the 2012 Edition of the "Australasian Code for Reporting of Exploration Results, Mineral Resources and Ore Reserves". Messrs Roux, Osborne and Donaldson and Mrs Levett consent to the inclusion in the report of the matters based on this information in the form and context in which it appears.

Ore Reserves

The information in this report that relates to the Ore Reserve for Gruyere is based on information compiled by Mr Daniel Worthy. Mr Worthy is an employee of Gruyere Mining Company Pty Ltd and is a Member of the Australasian Institute of Mining and Metallurgy (MAusIMM 208354). Mr Max Sheppard, Principal Mining Engineer for Gold Road has endorsed the Ore Reserve for Gruyere on behalf of Gold Road.

- Mr Sheppard is an employee of Gold Road and is a Member of the Australasian Institute of Mining and Metallurgy (MAusIMM 106864).

The information in this report that relates to the Ore Reserve for Attila and Alaric is based on information compiled by Mr Max Sheppard, Principal Mining Engineer for Gold Road.

Mr Worthy and Mr Sheppard have sufficient experience that is relevant to the style of mineralisation and type of deposits under consideration and to the activity currently being undertaken to qualify as a Competent Person as defined in the 2012 Edition of the "Australasian Code for Reporting of Exploration Results, Mineral Resources and Ore Reserves". Mr Worthy and Mr Sheppard consent to the inclusion in this announcement of the matters based on this information in the form and context in which it appears.

New Information or Data

Gold Road confirms that it is not aware of any new information or data that materially affects the information included in the original market announcements and, in the case of estimates of Mineral Resources and Ore Reserves that all material assumptions and technical parameters underpinning the estimates in the relevant market announcement continue to apply and have not materially changed. The Company confirms that the form and context in which the Competent Person's findings are presented have not materially changed from the original market announcement.

APPENDIX 2

MINERAL RESOURCE TABLE¹

	Gruyere Project Joint Venture ² – 100% Basis			Gold Road – 50%		
Project Name	Tonnes (Mt)	Grade (g/t Au)	Contained Metal (Moz Au)	Tonnes (Mt)	Grade (g/t Au)	Contained Metal (Moz Au)
Gruyere³ (2018)	143.46	1.27	5.88	71.73	1.27	2.94
Measured	14.06	1.16	0.53	7.03	1.16	0.26
Indicated	91.52	1.27	3.73	45.76	1.27	1.87
Inferred	37.88	1.33	1.62	18.94	1.33	0.81
Attila + Alaric + Montagne + Argos + YAM14	13.19	1.48	0.63	6.59	1.48	0.31
Measured	0.29	1.99	0.02	0.14	1.99	0.01
Indicated	7.11	1.63	0.37	3.56	1.63	0.19
Inferred	5.79	1.28	0.24	2.89	1.28	0.12
Total Mineral Resource	156.65	1.29	6.51	78.32	1.29	3.25
Measured	14.35	1.18	0.54	7.17	1.18	0.27
Indicated	98.63	1.29	4.10	49.31	1.29	2.05
Inferred	43.67	1.32	1.86	21.83	1.32	0.93

NOTES:

1. All Mineral Resources are completed in accordance with the JORC Code 2012
2. All figures are rounded to reflect appropriate levels of confidence. Apparent differences may occur due to rounding
3. Mineral Resources are inclusive of Ore Reserves
4. The Gruyere Project Joint Venture is a 50:50 joint venture between Gold Road and Gruyere Mining Company Pty Limited a wholly owned Australian subsidiary of Gold Fields. Figures are reported on a 100% basis unless otherwise specified
5. All Mineral Resources reported at various cut-off grades according to material type, metallurgical recovery and distance to the Gruyere Mill (in construction). Gruyere: 0.34 g/t Au (fresh), 0.30 g/t Au (transition), 0.29 g/t Au (Oxide). Attila, Argos, Montagne and Alaric: 0.50 g/t Au. YAM14: 0.40 g/t Au (ASX announcement dated 21 February 2018)
6. All Mineral Resources are constrained within a A\$1,850/oz optimised pit shell derived from mining, processing and geotechnical parameters from ongoing Pre-Feasibility Studies and operational studies
7. All dollar amounts are in Australian dollars

APPENDIX 3

ORE RESERVE TABLE

	Gruyere Project Joint Venture – 100% Basis			Gold Road – 50%		
Project Name	Tonnes (Mt)	Grade (g/t Au)	Contained Metal (Moz Au)	Tonnes (Mt)	Grade (g/t Au)	Contained Metal (Moz Au)
Gruyere (2018)	93.76	1.18	3.56	46.88	1.18	1.78
Proved	14.91	1.09	0.52	7.45	1.09	0.26
Probable	78.85	1.20	3.04	39.43	1.20	1.52
Attila + Alaric	3.59	1.55	0.18	1.80	1.55	0.09
Proved	0.32	1.68	0.02	0.16	1.68	0.01
Probable	3.27	1.53	0.16	1.63	1.53	0.08
Total Ore Reserve	97.35	1.20	3.74	48.68	1.20	1.87
Proved	15.23	1.11	0.54	7.62	1.11	0.27
Probable	82.12	1.21	3.20	41.06	1.21	1.60

NOTES:

1. All Ore Reserves are completed in accordance with the JORC Code 2012
2. All figures are rounded to reflect appropriate levels of confidence. Apparent differences may occur due to rounding
3. The Gruyere Project Joint Venture is a 50:50 joint venture between Gold Road and Gruyere Mining Company Pty Limited a wholly owned Australian subsidiary of Gold Fields. Figures are reported on a 100% basis unless otherwise specified
4. Gold Road holds an uncapped 1.5% net smelter return royalty on Gold Fields' share of production from the Gruyere JV once total gold production from the Gruyere JV exceeds 2 million ounces
5. The Ore Reserves are constrained within a A\$1,600/oz mine design derived from mining, processing and geotechnical parameters as defined by Pre-Feasibility Studies and operational studies (ASX announcement dated 21 February 2018)
6. The Ore Reserve is evaluated using variable cut off grades: Gruyere - 0.34 g/t Au (fresh), 0.30 g/t Au (transition), 0.29 g/t Au (oxide). Attila - 0.70 g/t Au (fresh), 0.60 g/t Au (transition), 0.55 g/t Au (oxide). Alaric - 0.67 g/t Au (fresh), 0.62 g/t Au (transition), 0.57 g/t Au (oxide)
7. Ore block tonnage dilution averages and gold loss estimates: Gruyere – 4.9% and 0.4%. Attila - 14% and 3%. Alaric - 20% and 6%
8. All dollar amounts are in Australian dollars

APPENDIX 4

GOLD FIELDS SUBSTANTIAL HOLDING

- Gold Fields became substantial shareholder 18 May 2017
- 10% (87.1M shares) ownership capped by standstill
 - 12.8M shares at 52.5c on 15 March 2017
 - 74.3M shares at 86c on 18 May 2017 purchased from RCF
 - May transaction at 27% premium to prevailing share price
- Standstill in place for term of Gruyere JV Agreement plus 2 years
- Gold Fields restricted to maximum 10% shareholding, until earlier of:
 1. Two years after GFA or its affiliates cease to be a participant in the Gruyere Project Joint Venture;
 2. A person or persons jointly or in concert (other than GFA or its affiliates), publicly announce their intention to commence a transaction which would result in a person or persons acquiring a relevant interest of 20% or more in Gold Road's issued shares (Control Transaction); or
 3. The date Gold Road publicly announces that its Board of Directors has approved an agreement which contemplates a Control Transaction.

ASX Announcement
19 May 2017

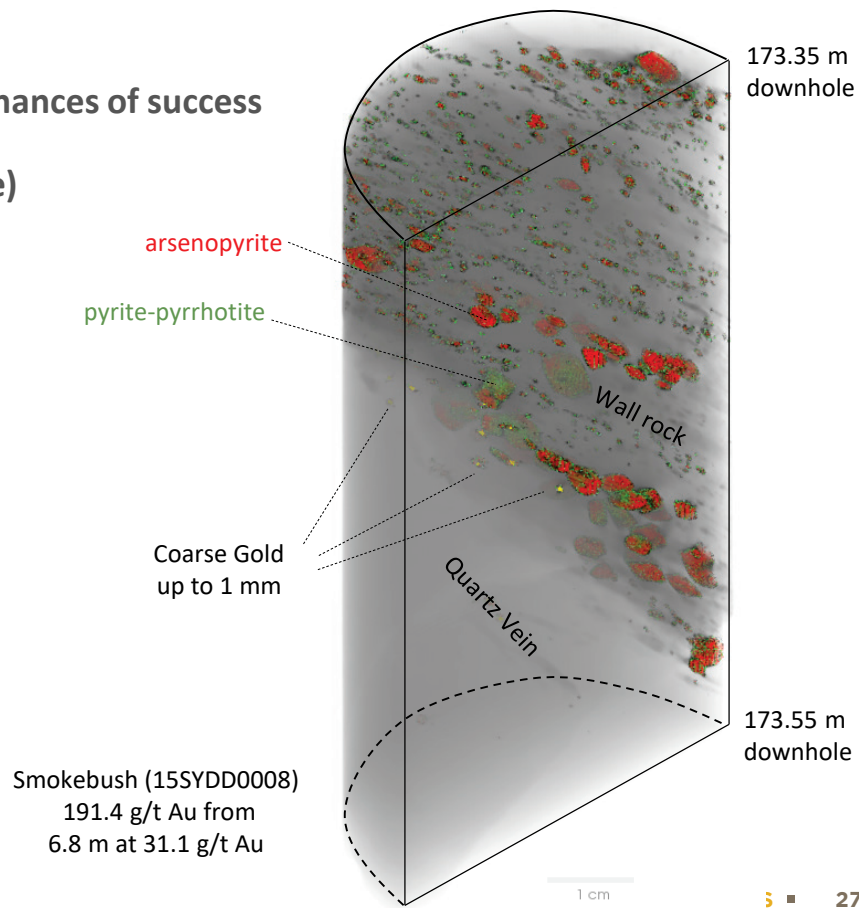
**27% PREMIUM PAID
BY GOLD FIELDS TO
INCREASE HOLDING IN
GOLD ROAD TO 10%**

ENHANCING SUCCESS

EMBRACING INNOVATION

Sourcing innovative techniques to continuously improve our chances of success

- Diamond core X-ray high-resolution 3D imaging (**Orexlore**)
- Regolith and soil sampling
- Automated assay analysis (Chrysos PhotonAssay®)
- Mineral system chemistry mapping & XRD (CSIRO)
- Magnetotellurics
- Latest downhole and surface survey tools (DeviSight/Flex)



GRUYERE GOLD PROJECT

UPDATE DECEMBER 2018

Construction

- First gold production remains on target for June 2019 quarter
- As at 30 November 2018, all major equipment and materials are on site
 - Overall **Project construction at 85% complete**
 - **EPC construction (process plant and associated infrastructure) at 77% complete**

Updated Mine plan

- Gruyere confirmed as a global Tier 1 gold mine with a long life and forecast high margins
- Life of mine average annual production plan has increased to approximately 300,000 ounces per annum (2016 Feasibility Study: 270,000 ounces per annum)
- Average All-in Sustaining Costs (AISC) over the life of mine forecast at A\$1,025 per ounce (US\$738 per ounce)
- AIC costs are very similar to AISC as limited additional growth capital is forecast.
- Mill processing throughput lifted from 7.5 Mtpa to 8.2 Mtpa resulting from previously announced and fully funded scope changes
- Attila and Alaric Ore Reserves (180koz) now incorporated into the production schedule in 2024 and 2025. A&A Reserves expected grow further after drill definition in 2018
- 5 stage mine plan and 2 years of grade control drilling significantly de-risk project and ramp up

Mining Commenced

- Waste mining commenced this quarter
- Ore mining is anticipated to commence 1QCY19 with substantial stockpiles anticipated for commissioning