

This Week

Originally Published
 October 14th 2009

Eleckra Mines (EKM)

Eleckra was recommended to subscribers on the 9th of September ...
 Page 1

Originally Published October 14th 2009

ELECKRA MINES (EKM)

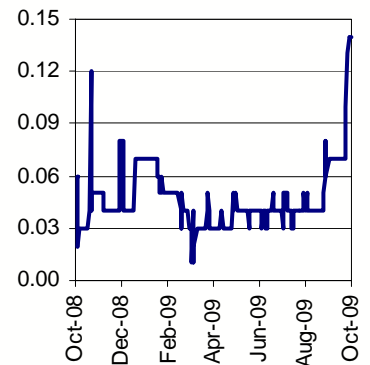
ELECKRA MINES (EKM): Eleckra was recommended to subscribers on the 9th of September at 5 cents per share, ahead of drilling which is now underway. Early results from the first 14 holes of the 20 holes drilled at Central Bore have come up with the goods, moving the share price up to 15 cents.

Drilling shows thin but high grade gold intercepts which will clearly support underground mining after a short open pit programme. These results are encouraging for Eleckra and show that its Yamarna Greenstone Belt does host high grade gold mineralisation.

Results include:

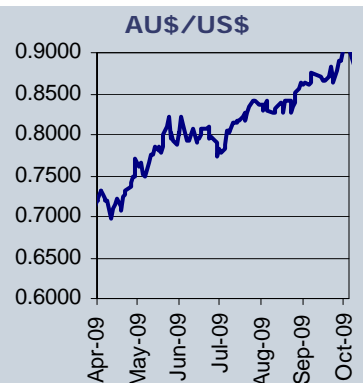
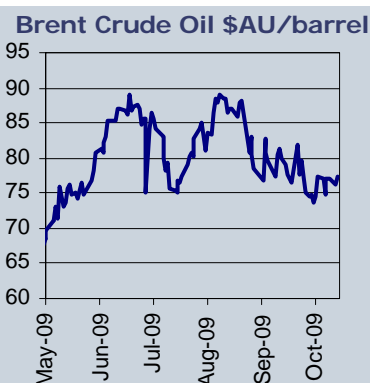
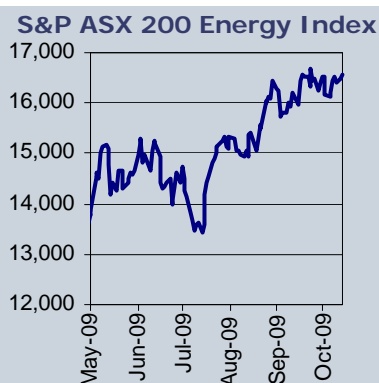
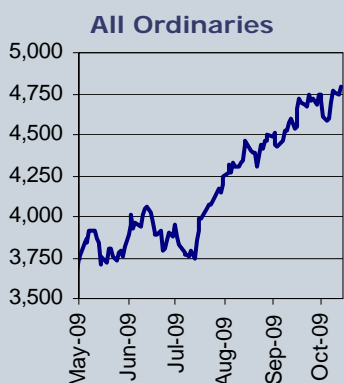
- 1 metre at 17.8 g/t Au from 100 metres
- 3 metres at 25.6 g/t Au from 75 metres including 1 metre at 72.85 g/t Au
- 3 metres at 4.42 g/t Au from 40 metres including 1 metre at 10.3 g/t Au
- 2 metres at 26.5 g/t Au from 100 metres including 1 metre at 41.99 g/t Au
- 3 metres at 8.85 g/t Au from 57 metres including 1 metre at 24.7 g/t Au
- 1 metre at 9.47 g/t Au from 106 metres
- 4 metres at 2.93 g/t Au from 95 metres including 1 metre at 7.48 g/t Au

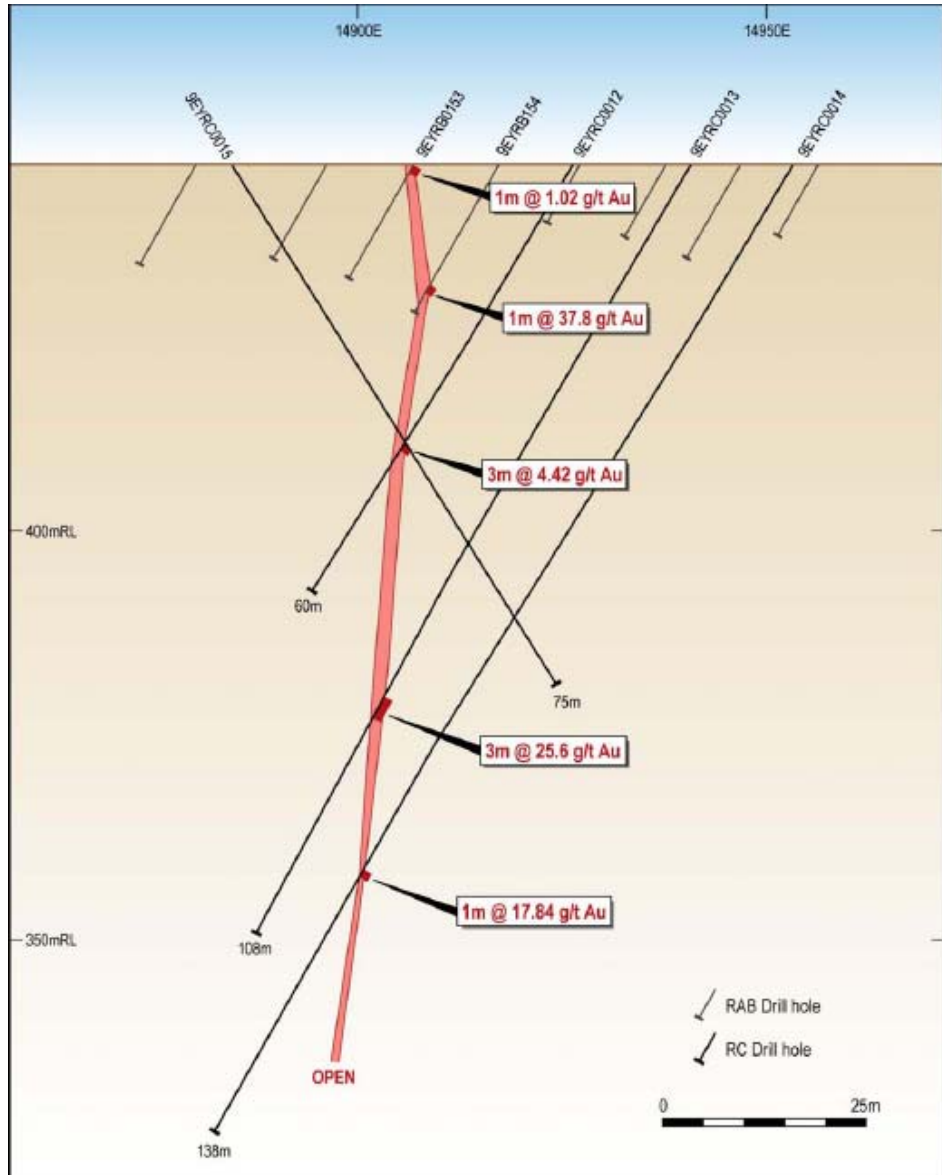
EKM Price History



Indices & Prices	
All Ordinaries	4,789.80
Energy Index	16,572.30
Brent AU\$/bbl	77.38
AUS\$/US\$	0.9053
As at Close October 13th	

(Continued on page 2)





Source: Elekra

Contact

Peter Strachan:
Pex Publications:

Peter@stockanalysis.com.au
oilinfo@pex.com.au

5/1 Almondbury Rd Mt Lawley, WA 6050
Tel: 08 9272 6555 Fax: 08 9272 5556
Website: www.stockanalysis.com.au
www.pex.com.au

Disclaimer

The information or advice (including any financial product advice) herein is believed to be reliable and accurate when issued however, StockAnalysis Pty Ltd ABN 39 079812945; AFSL 259730 ("Strachan"), does not warrant its completeness, reliability or accuracy. Strachan, its Directors and their Associates from time to time may hold shares in the securities mentioned in this report and therefore may benefit from any increase in the price of those securities. Opinions and estimates constitute Strachan's judgment. The author certifies that the views expressed in this document accurately reflect the analyst's personal views about the subject company and are subject to change without notice. Strachan, its officers, agents and employees exclude all liability whatsoever, in negligence or otherwise, for any loss or damage relating to this document to the full extent permitted by law. This material is not intended as an offer or solicitation for the purchase or sale of any financial instrument. The investments and strategies discussed herein may not be suitable for all investors. In preparing such general advice no account was taken of the investment objectives, financial situation and particular needs of a particular person. Therefore, before acting on the advice, you should consider the appropriateness of the advice, having regard to your objectives, financial situation and needs. There may be a product disclosure statement or other offer document for the securities and financial products we write about in StockAnalysis. You should obtain a copy of the product disclosure statement or offer document before making any decision about whether to acquire the security or product. If you have any doubts you should contact your investment advisor. The investments discussed may fluctuate in price and changes in commodity prices and exchange rates may have adverse effects on the value of investments.

The author has small holdings in shares of BRU, MMA, SRI & BRT. Modest holdings in OEL, OSH, CWP, NXS, UXC, MGR, GRD, SUN, HZN, RCR, TAP, AWE, TLS, PTM, & GLH and larger holdings in ACE, HAV.

StockAnalysis



StockAnalysis is a weekly evaluation of the companies most likely to provide a healthy return on your investment. Presented by respected analyst Peter Strachan, BSc, SF Finsia. StockAnalysis aims to help you outperform the market by indentifying undervalued, growth companies with a focus on the energy sector.

- Assessment of the big issues facing the stock market
- Stock recommendations with specific analysis
- Company analysis & performance results
- Comment on economic environment
- Takeovers, mergers & new floats
- Stocks to watch

SATISFACTION GUARANTEE

If for any reason you decide StockAnalysis does not suit your needs, just inform us and we will refund the balance of your subscription



SUBSCRIBE NOW!

Yes, I would like to subscribe to StockAnalysis

I would like to receive StockAnalysis by: email mail*

I would like to subscribe for: 12 months (\$425) 6 months (\$220) 3 months (\$110)

Name	<input type="text"/>	
Address	<input type="text"/>	
	<input type="text"/>	
Phone #	<input type="text"/>	Email <input type="text"/>

Invoice me

Mastercard Bankcard Visa Amex

Card Name	<input type="text"/>	
Card Number	<input type="text"/>	
Exp Date	<input type="text"/> / <input type="text"/>	Signature <input type="text"/>

EFT Deposit

Bank	National Australia Bank, Melbourne Victoria 3000
Account	BSB: 083 004 Account # 558 371 230 Account name Pex Publications Pty Ltd

Please fax to (08) 9272 5556, mail to Pex Publications 5/1 Almondbury Rd Mt Lawley WA or call 1800 739 855 or go to www.stockanalysis.com.au

*Please note the following postage costs apply:

Postage inside Australia - 12 months: \$96; 6 months: \$48; 3 months: \$24.

International postage - 12 months: \$168; 6 months: \$84; 3 months \$42.