



EXTENSIVE GOLD ANOMALISM IDENTIFIED AT BREELYA-MINNIE HILL CAMP

Highlights

Sumitomo JV makes positive start with extensive anomalous gold zone outlined by geochemical surveys within the Sumitomo JV area at the Breelya - Minnie Hill Gold Camp

- **Two >15km gold anomalous structural trends identified, with almost all of the 27 SAM generated targets within the Sumitomo JV area coinciding with these trends**
- **Geochemical data together with other layers of information are currently being assessed and drill targets prioritised**
- **15,000 metre Aircore drilling program planned to commence in October 2013**

Gold Road Resources Limited (**Gold Road** or the **Company**) (ASX: GOR) is pleased to advise that it has identified **two new anomalous gold bearing trends**, each extending for **more than 15 kilometres**. The trends have been inferred from recently completed auger sampling by the Sumitomo JV, as well as from existing geochemical, geological and geophysical data sets. The **Breelya – Minnie Hill Gold Camp tenements** are located approximately 50 kilometres south of the high-grade Central Bore gold deposit on the Yamarna Greenstone Belt (Figure 4).

The Breelya – Minnie Hill Gold Camp is one of the “high-priority Gold Camp Targets” identified through the Regional Targeting exercise undertaken through 2012 – 2013 (ASX announcement dated 6 June 2013).

As announced to the market in July 2013, 22 preliminary targets were identified using the SAM survey and a further 5 targets were identified in early September 2013 after the final interpretation work was completed.

The Breelya – Minnie Hill area is characterised by the presence of sand and Permian sandstone cover up to 40 metres thick. An orientation program over known mineralisation at Minnie Hill and Augusta prospects indicated that <2mm fraction samples of the upper part of cemented or lateritised Permian sandstone cover sequence collected from auger holes drilled to refusal was generally more effective and their response was stronger than in traditional soil surveys (Figure 1).

ASX Code: GOR

ABN 13 109 289 527

COMPANY DIRECTORS
Ian Murray
Chairman

Ziggy Lubieniecki
Executive Director

Russell Davis
Non-Executive Director

Martin Pyle
Non-Executive Director

Kevin Hart
Company Secretary

CONTACT DETAILS
Principal & Registered Office
22 Altona St, West Perth WA 6005

Website
www.goldroad.com.au

Email
perth@goldroad.com.au

Phone
+61 8 9200 1600
Fax
+61 8 9481 6405



A total of 1,090 auger holes were drilled to refusal in the period of 3 months from June to August 2013. The auger program was designed within the SAM survey area of approximately 85 square kilometres on nominal 50m x 400m grid and in the area where historical soil surveys were not effective or where there was no previous work.

Samples were collected from the bottom metre of each auger hole and were sieved to <2mm fraction to produce a 100-gram sample, which was analysed using aqua-regia digestion with a 0.1 ppb detection limit.

The drill-hole locations were surveyed using a handheld GPS. Sampling was carried out under Gold Road's protocols and QAQC procedures as per industry standards.

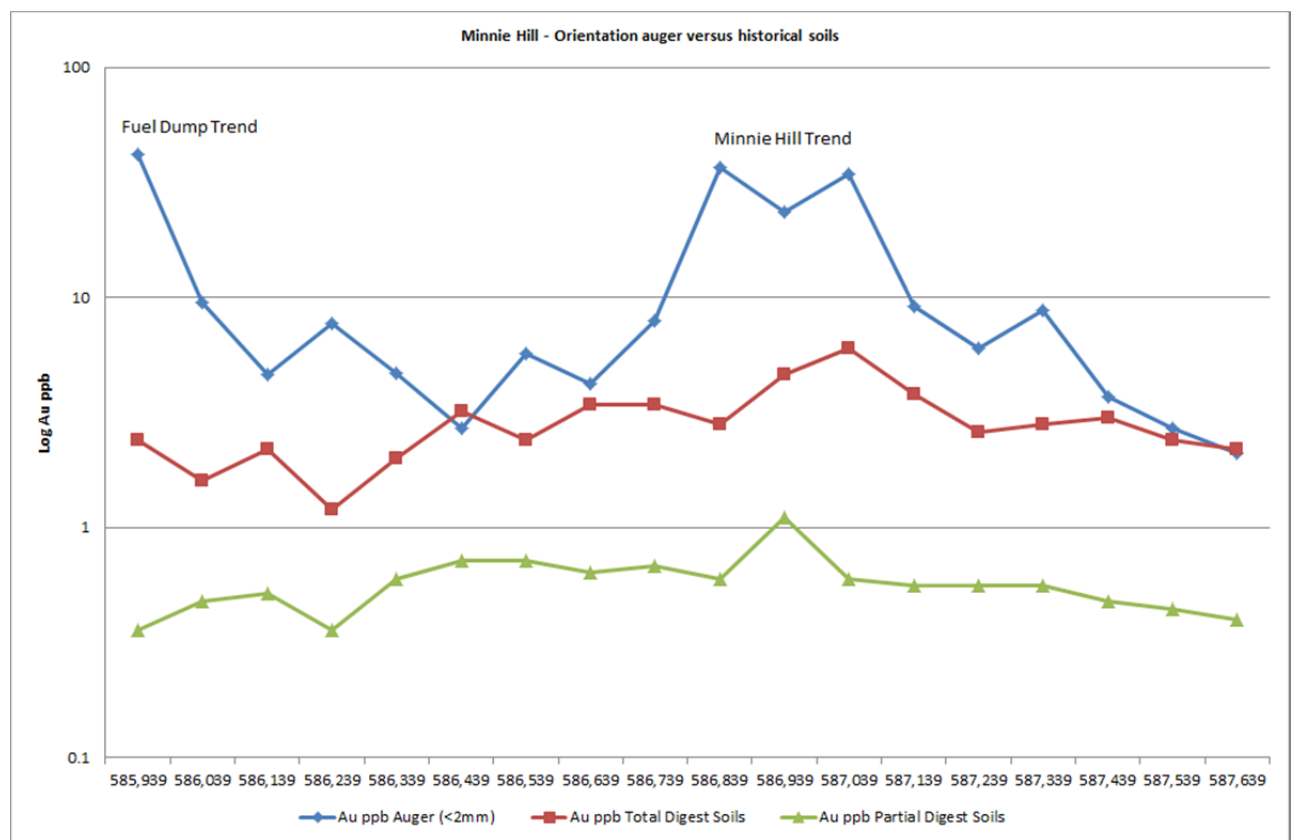


Figure 1: Comparison of different sample media at Fuel Dump – Minnie Hill traverse at 6,841,660mN (GDA94) and between 585,939 and 587,639mE (GDA94)

The interpretation of geochemical data (soils and auger) together with SAM, magnetics and geology indicates that there are two main anomalous gold bearing trends; the main one is along Breelya - Minnie Hill/AB14/AB15/AB16 and another one along Fuel Dump/AB17. Both trends are over 15 kilometres long and open-ended (Figure 2). These gold anomalies mostly coincide with magnetic and geological trends (Figure 3), and gold intercepted in previous drilling, providing confidence that these auger anomalies may be reflecting bedrock gold mineralisation as recently identified by RAB drilling at Dorothy Hills (ASX announcements 9 and 17 September 2013). The anomaly at Augusta (believed to be the southern extension of Fuel Dump trend) is 5 kilometres long.



Gold Road's Chairman Ian Murray said, "This is the longest gold anomaly identified so far in the entire Yamarna Greenstone Belt. Sumitomo Metal Mining Oceania and Gold Road are encouraged by these results and we are both looking forward to the results of further exploration work.

We will be extending the auger drilling to test these gold anomalies further to the north and south. The upcoming Aircore drilling program will test the prioritised SAM targets which are coincident with these anomalies."

A 15,000m Aircore drilling program will commence in October 2013.

Exploration Program for 2013

Target Area	Anticipated Drilling Dates (subject to change due to drill results)
RC Drilling - South Dorothy Hills – Yam 13 & 14 (Gold Road 100%)	October 2013
RAB/Aircore Drilling - Breelya – Minnie Hill (Gold Road-Sumitomo South Yamarna Joint Venture)	October 2013
RAB/Aircore Drilling - Pacific Dunes – Corkwood (North Yamarna – Gold Road 100%)	November 2013

For further information please visit www.goldroad.com.au or contact:

Ian Murray
Executive Chairman
Telephone: +61 8 9200 1600

Media
Karen Oswald
Walbrook Investor Relations
Mob: 0423 602 353
karen.oswald@walbrookir.com.au

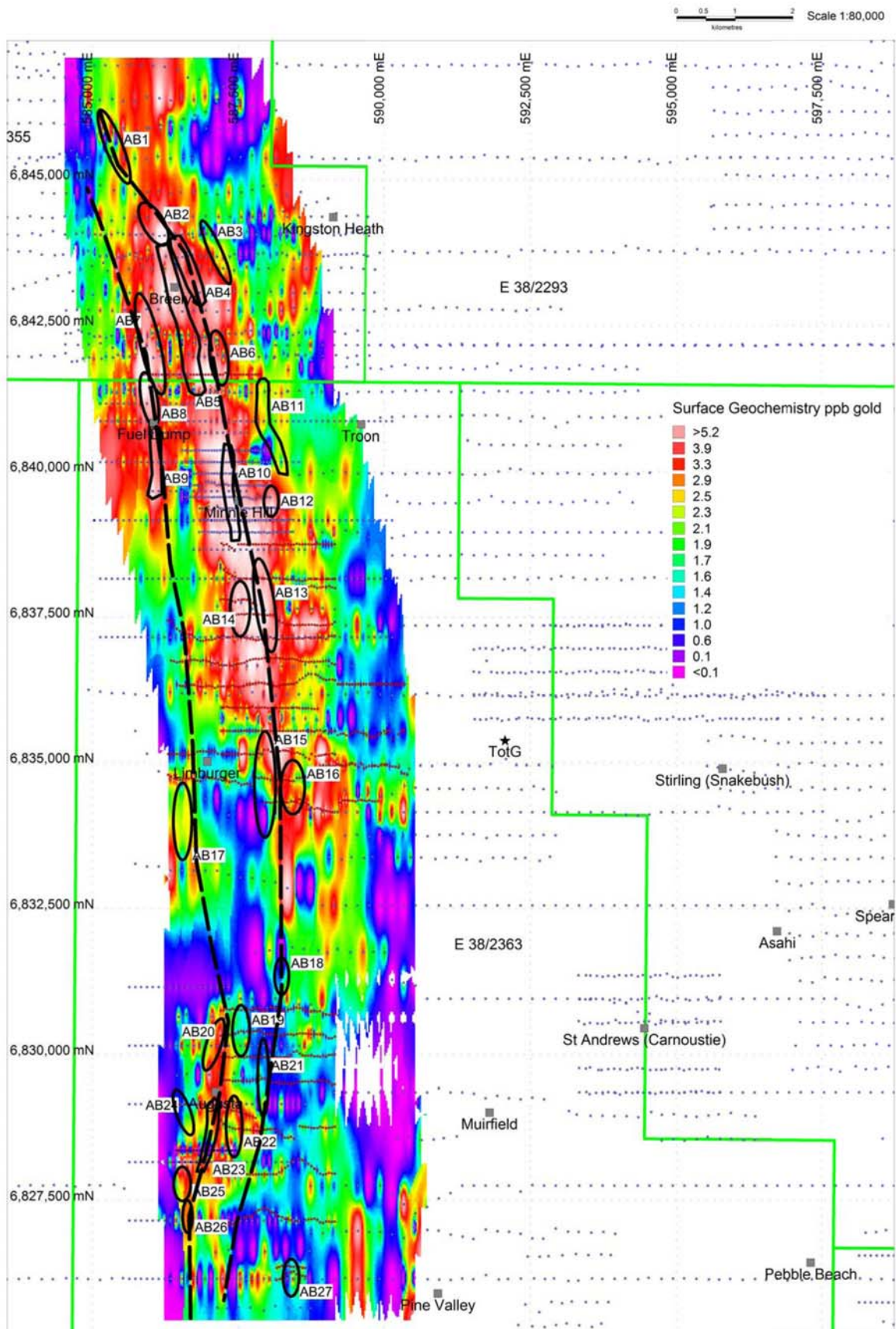


Figure 2: Two gold-geological trends (black stipple lines) and SAM generated targets (black) over gold anomalies image from all geochemical surveys at Breelya – Minnie Hill Gold Camp. Locations of recent auger are red squares and historical soils are blue squares.

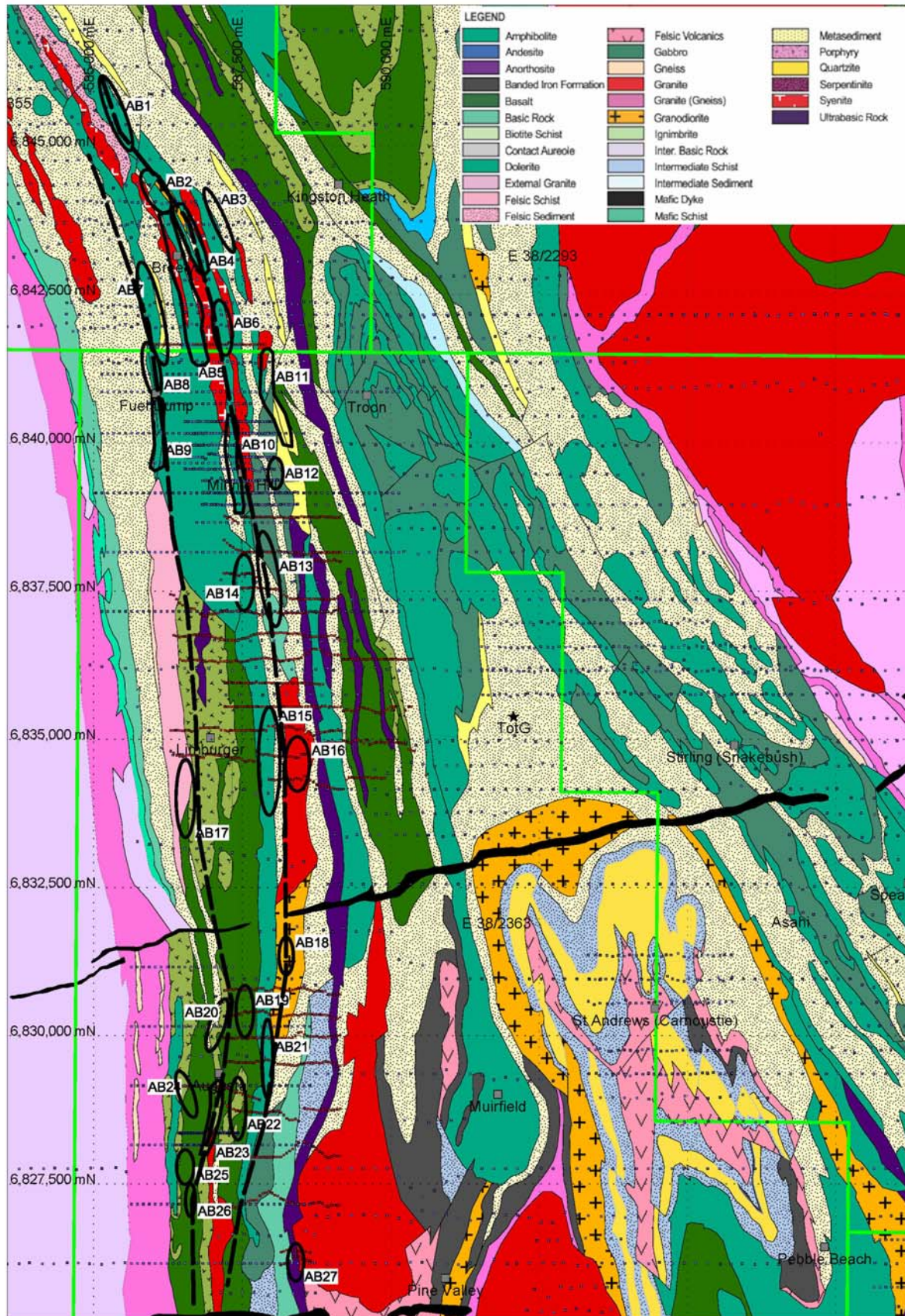


Figure 3: Two gold-geological trends (black stipple lines) and SAM generated targets (black) over interpreted geology at Breelya – Minnie Hill Gold Camp. Locations of recent auger are red squares and historical soils are blue squares.

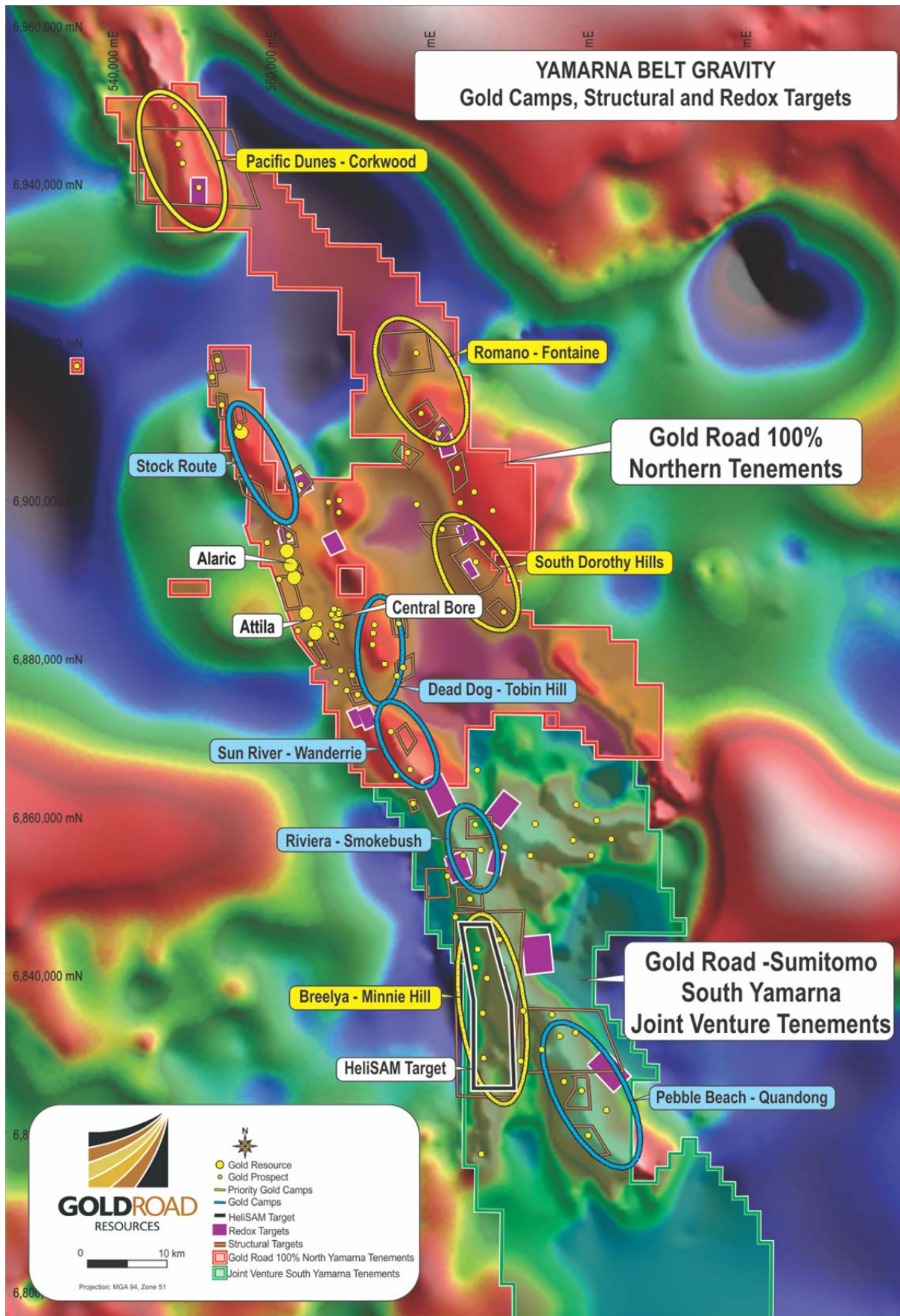


Figure 4: Gold Road 100% tenements and Gold Road-Sumitomo South Yamarna Joint Venture tenements showing location of Gold Camps and Redox Targets

About Gold Road Resources

Gold Road Resources Limited (ASX: **GOR**) is exploring and developing its wholly-owned **Yamarna Belt**, a newly discovered gold region covering ~5,000 square kilometres on the Yilgarn Craton, 150km east of Laverton in Western Australia.

Gold Road announced in May 2013 an exploration joint venture with Sumitomo Metal Mining Oceania Pty Ltd (a subsidiary of Sumitomo Metal Mining Co. Limited) for Sumitomo Metal Mining to earn up to 50% interest in Gold Road's South Yamarna tenements, an area covering 2,720km².

The Yamarna Belt, adjacent to the 500 kilometre long Yamarna shear zone, is historically underexplored and highly prospective for gold mineralisation. Geologically similar to the prolific Kalgoorlie Gold Belt, the Yamarna Belt has a resource of 1.3 million ounces of gold, hosts a number of significant new discoveries and lies north of the 7.9 million ounce Tropicana deposit.

Gold Road is prioritising exploration of five **Gold Camp Targets** on the Yamarna Belt. Identified in 2012 through interpretation of various geological and geophysical data sets, each target has a 15-20 kilometre strike length and contains numerous prospects. Initial exploration of these targets has been very encouraging.

Gold Road plans to fund exploration through production from its more developed projects – Central Bore and Attila. Central Bore Project has a JORC resource of 201,100 ounces of gold at an average grade of 7.7g/t Au and includes the high-grade Imperial Shoot, which has a JORC Resource of 112,200 ounces of gold at an average grade of 22.7g/t Au. Attila has a JORC Resource of 1,060,000 ounces of gold at an average grade of 1.3g/t. It extends more than 33 kilometres and contains numerous deposits including Attila, Alaric, Khan and Khan North.

Current JORC compliant Gold Resource. Note: rounding errors may occur

Project Name (cut-off)	'000t	Grade g/t Au	Ounces Au
Central Bore (1.0 g/t) (2013)	814	7.7	201,100
Measured	43	26.6	36,700
Indicated	428	8.7	119,300
Inferred	343	4.1	45,100
Attila Trend (0.5 g/t) (2012) (encompasses Attila South; Attila North; Alaric; Khan and Khan North projects)	25,527	1.29	1,060,000
Measured	8,382	1.44	389,000
Indicated	9,360	1.24	373,000
Inferred	7,785	1.19	298,000
TOTAL	26,341	1.5	1,261,100

NOTES:

The information in this report which relates to Exploration Results or Mineral Resources is based on information compiled by Ziggy Lubieniecki, the Technical Director of Gold Road Resources Limited, who is a Member of the Australasian Institute of Mining and Metallurgy and a Member of the Australian Institute of Geoscientists. Mr Lubieniecki has sufficient experience which is relevant to the style of mineralisation and type of deposit under consideration to qualify as a Competent Person as defined in the 2004 Edition of the "Australasian Code for Reporting of Exploration Results, Mineral Resources and Ore Reserves". Mr Lubieniecki consents to the inclusion in the report of the matters based on this information in the form and context in which it appears.